

# **SUMMIT** **TRUCK BODIES**



**785-989-3100**  
**[www.summitbodies.com](http://www.summitbodies.com)**

# **INDEX**

## **SUMMIT LUBE VAN**

- SPECIFICATIONS:
  - Example Drawings
  - Approximate Weight Study
  - General Pictures
- SAFETY DECALS & OPERATION:
  - Safety Decals for Lube Operation
  - Be familiar with truck manufacturer's Operator safety controls
- OPERATION OF HYDRAULIC LUBE FILL AND DELIVERY:
  - Truck Ignition Switch
  - Parking / Emergency brake
  - Power Take-off switch
  - Strobe Light Operation
  - Filling of various products to tanks for dispensing
- PRODUCT DELIVERY:
  - Rear door to access control panel and delivery reels
  - Main operation of delivery control panel
  - Oil product (various oils) and gear lube delivery
  - Antifreeze / water delivery
  - Waste pump operation for oil and antifreeze product
    - Full tank shutdown
  - Air Compressor
- OPTIONAL ACCESSORIES:
  - Pressure Washer
  - Product Tank Heaters
  - Hydraulic Generator
  - Quartz Lighting with Hydraulic Generator
- TROUBLESHOOTING:

# FORWARD

This guide is a reference for the new operator and a refresher for the experienced one. Read – study – and keep it with the truck.

This guide contains safety, operation, and maintenance information.

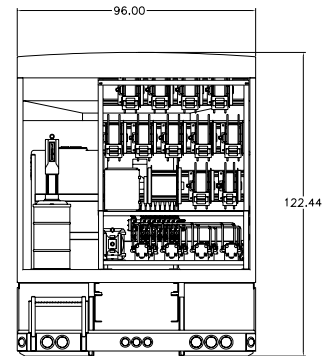
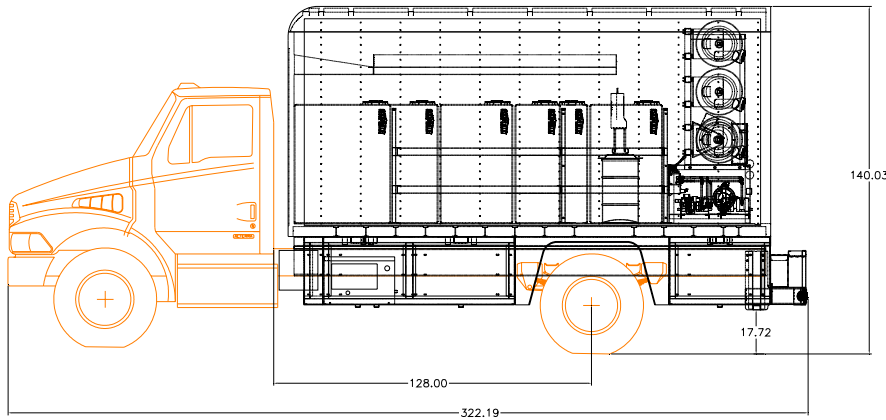
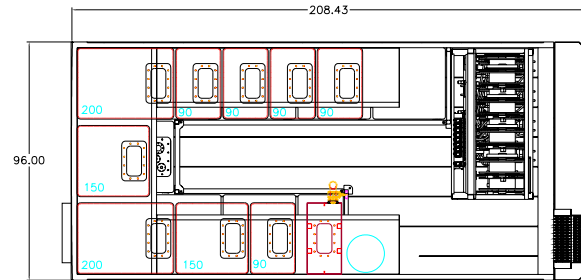
Illustrations or photos guide the operator through correct procedures of checking, starting, operating and stopping the systems. Note that some graphics or photos may differ slightly from truck to truck.

Operating techniques outlined in the guide are basic. Skill and techniques develop as the operator gains knowledge of their lube truck and products being delivered.

You are responsible for observing all applicable Federal, State, and Local Laws and Regulations and for following the manufacturer's instructions for operation and maintenance of the truck. The design and specifications allowed for appropriate weight distribution when loaded with products for delivery.

# Enclosed Lube Van

1-200gal oil  
 2-150gal oil  
 4-90gal oil  
 1-90gal AF  
 1-200gal oil waste  
 1-120# Grease



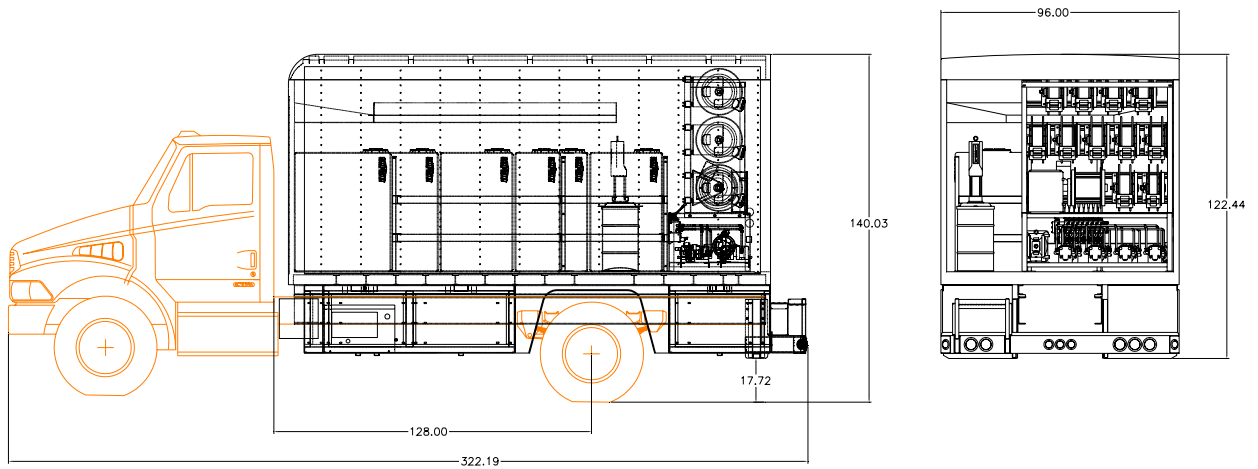
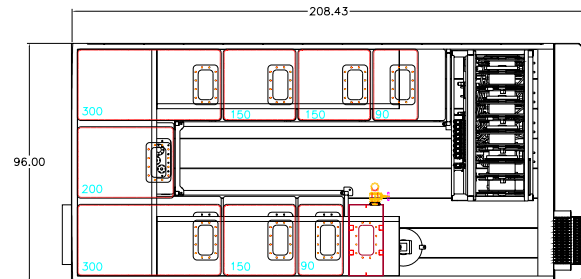
## Approximate Weight Study:

Weights can vary from chassis to chassis and from design to design.

	Front Axle:	Rear Axle:	Total Weight:
Empty:	7,940 lbs	13,030 lbs	20,970 lbs
Loaded:	9,840 lbs	18,150 lbs	27,990 lbs

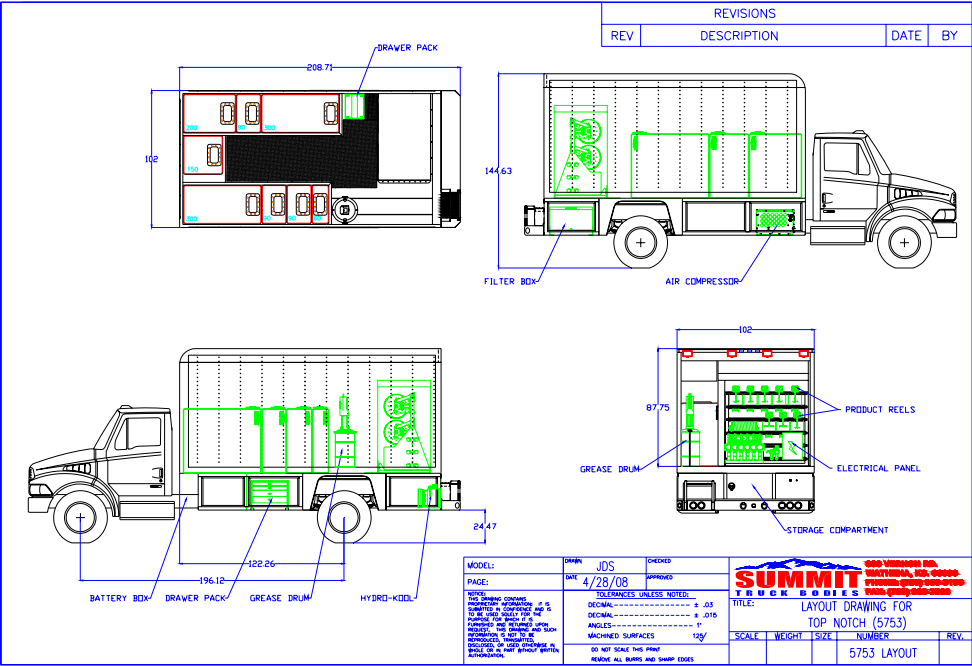
# Enclosed Lube Van

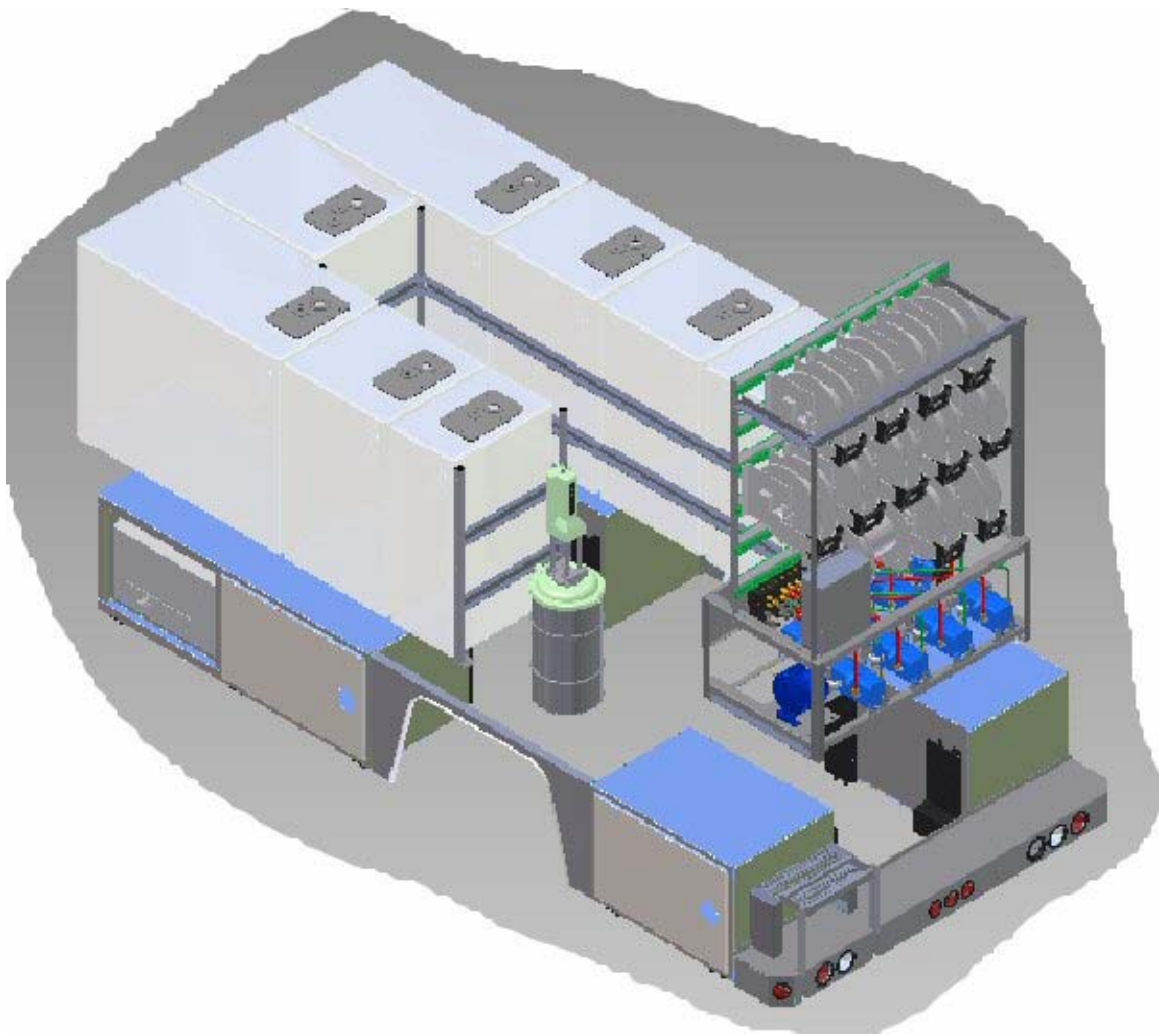
1-300gal oil  
 1-200gal oil  
 3-150gal oil  
 1-90gal oil  
 1-90gal AF  
 1-300gal oil waste  
 1-120# Grease



Approximate Weight Study:  
 Weights can vary from chassis to chassis and from design to design.

	Front Axle:	Rear Axle:	Total Weight:
Empty:	7,940 lbs	13,030 lbs	20,970 lbs
Loaded:	10,140 lbs	18,480 lbs	28,620 lbs





**Typical Lube Van cut away for clarity and ease of viewing.**



**Rear view of typical Lube Van**  
**Roll up door also available**







**Interior view of Lube Van  
Product Tanks**

## SAFETY DISCLAIMER

Summit Truck Bodies reserves the right to make technical changes for product improvements. This manual may contain illustrations and photographs, for demonstration purposes, which slightly deviate from the actual product.

Safety information provided in this manual is a basic guide to operation. Summit Truck Bodies cannot anticipate every circumstance that might involve a potential hazard. Warnings in this manual and on the vehicle are NOT all-inclusive.

You are responsible for safe operation of this equipment. You must satisfy yourself that the operating procedures and work methods you use are safe; including those not specifically mentioned in this manual.

Follow State and Federal health and safety rules and/or local regulations for operating and maintaining this equipment.

This manual does not replace any laws and regulations. The operator and the equipment are required to comply with all applicable laws and regulations.

## SIGNAL WORDS

Signal words are the word or words that call attention to the safety sign and designate a degree or level of hazard seriousness. The signal words used in this manual are **DANGER**, **WARNING**, and **CAUTION**.



**DANGER** indicates an imminently hazardous situation which, if not avoided, will result in death or serious injury.



**WARNING** indicates a potentially hazardous situation which, if not avoided, could result in death or serious injury.



**CAUTION** indicates a potentially hazardous situation which, if not avoided, could result in minor or moderate injury.



**CAUTION** used without the safety alert symbol indicates a potentially hazardous situation which, if not avoided, may result in property damage.

### SAFETY SYMBOLS

Safety symbols are provided to remind the operator of hazardous situations. Summit Truck Bodies provides symbols in an attempt to inform all operators of as many potential hazards as possible. These symbols cover many, but not all, potential dangers and hazards associated with this equipment.

Learn these and all safety symbols found on the vehicle decals and placards to prevent equipment damage, injury, or death.

Reference the Decals section of the manual for more details.

---

### OPERATOR RESPONSIBILITY



This equipment is potentially dangerous if proper safety procedures are not followed.

- Read all Operators Manuals before operating.
- Only operate the vehicle if you understand all safety instructions and warning.
- Use the equipment for its intended purposes only.
- Make no modifications or alterations.
- Check equipment daily and repair or replace worn or damaged parts immediately.
- Do not exceed maximum working pressures of any component.
- Protect hoses from possible damage and do not use other uses such as pulling.
- Do not lift pressurized equipment.
- Do not put product in any system not specifically and clearly marked for that product. Product may damage pumps and other components.
- INJECTION HAZARD; fluid injected into the skin is a serious injury. **Get immediate medical attention.**
- Do not point the dispensing valve at any part of the body.
- Do not attempt to contain leaks with any part of the body.
- Tighten all connections prior to operating equipment. Use only nozzles and extensions designed for use with the valve(s).

## OPERATOR QUALIFICATIONS

### **DANGER**

Operators must be properly trained, qualified, and authorized to operate the vehicle. Know the location, learn the specific purpose, and demonstrate safe and proper use of all controls, instruments, indicator lights, and safety and instruction labels. Safety is your responsibility.

Trained and qualified operators will:

- be in good physical and mental condition.
- Be properly instructed on how to operate the vehicle.
- Have read and understood the operation manual(s) and all applicable warnings, cautions, and safety regulations.

## MODIFICATIONS

### **WARNING**

DO NOT make modifications to the truck.

Unauthorized modifications or alterations will VOID the warranty. DO NOT modify, disable, or bypass any safety devices.

## BEFORE STARTING THE VEHICLE

### **WARNING**

Wear all appropriate protective equipment which can include; footwear, gloves, and safety glasses. Make sure clothing is snug and properly belted. DO NOT wear loose clothing, jewelry, watches, or anything that can catch on controls, or moving parts.

Keep a complete set of manuals with vehicle at all times.

Carefully read and understand all instructions before operating the vehicle.

Perform daily inspections and make any repairs or replacement of parts prior to operating the vehicle.

Keep fingers and feet away from moving parts or pinch points to prevent pinching or crushing.



## Safety

---

### OPERATION SAFETY

#### **WARNING**

Never allow passengers to ride on the vehicle. DO NOT allow riders outside the cab.

Many fluids are flammable and can cause a fire or explosion. DO NOT smoke while refueling and keep sparks and open flames away from vehicle.

#### **CAUTION**

Contact with hot surfaces after the vehicle has been operated can result in serious personal injury.

---

### PRESSURE SAFETY

#### **WARNING**

Do not exceed maximum working pressures of any component as defined in Troubleshooting section of manual.

Protect hoses from possible damage and do not use other uses such as pulling.

Do not lift pressurized equipment.

---

### VEHICLE MAINTENANCE

#### **WARNING**

Follow the manufacturer's instructions for proper maintenance.

Death or serious injury can result from operating a vehicle before all repairs have been made and all proper maintenance is completed.

---

### SAFETY EQUIPMENT

Fire extinguishers (2)



# OPERATION

**PLEASE READ AND UNDERSTAND THE OPERATION OF YOUR SPECIFIC TRUCK MAKE AND MODEL FROM THE OPERATOR'S MANUAL SUPPLIED BY THE TRUCK MANUFACTURER.**

The following items are the use of truck functions which are necessary for the operation of these lube system deliveries.

## **TRUCK IGNITION SWITCH:**

The Ignition switch is located on the dash in the truck cab. (Location will vary with truck model).

The truck IGNITION SWITCH supplies power for all functions of the Lube Truck. This power can be shut down with use of the EMERGENCY STOP switch located on top of the operation control panel for all Lube functions in the delivery compartment.



## **PARKING / EMERGENCY BRAKE:**

The parking /emergency brake release is located on the dash panel in the truck cab. The switch cannot be activated until the truck generates approximately 90 psi (must read the truck manufacturer's operation manual for exact specification).

The PARKING / EMERGENCY BRAKE – when engaged will prevent the truck from moving with the engine running or not.

**PULL TO PARK** –To activate the parking or emergency brake, **Pull** knob out.

**PUSH TO RELEASE** –To release the parking or emergency brake, **PUSH** the knob in.



**POWER TAKE-OFF (PTO) SWITCH:**

The PTO switch (RED) is located on the dash in the truck cab. (Location will vary with truck model).

The red PTO switch activates the main hydraulic pump which supplies the oil to operate the delivery functions of the Lube Truck. The light in the switch will turn on when the PTO has been engaged.

**SERVICE / HOURMETER:**

The service / hourmeter located in the truck cab next to the Power Take-Off (PTO) switch displays the number of hours that the PTO switch is engaged.

**STROBE LIGHT OPERATION:**

The Strobe Light switch (BLACK) is located on the dash in the truck cab. (Location will vary with truck model).

The black STROBE LIGHT switch activates the two strobe lights (one at front and one at rear of cargo area) of the Lube Truck.

### **PRODUCT (OILS, ANTIFREEZE AND WATER) FILLING:**

The fill hole is located in the center of the top of each product tank identified with a quarter turn locking cap. Also located on the top of the product tank is a direct read fill indicator. Fill tank to full reading on the gauge or within 2” from top to allow for thermal expansion of the product.



### **PRODUCT DELIVERY:**

#### **MAIN OPERATION CONTROL PANEL:**

The main OPERATION CONTROL PANEL is located inside the delivery reel compartment, at the rear of the Lube Body, on the left side (behind the roll-up door). All lighting and delivery functions are labeled at each switch to which lights or product is being activated and when activated the switch light is illuminated.





**OIL PRODUCT (VARIOUS OILS) AND GEAR LUBE DELIVERY:**

*This delivery is the same functionality for different quantity of tanks of oil products to be delivered.*

Oil Product delivery is activated by such labeled switch on the main control panel and must be activated at the beginning of the delivery cycle. The product being delivered is labeled on the nozzle hanger.

Reel out the necessary hose to easily reach the vehicle for the oil and begin the delivery. Release the nozzle when ample oil is delivered and slide anti-drip nozzle toward meter and reel in hose and hang the nozzle in the storage holder and de-activate switch.

**ANTIFREEZE / WATER DELIVERY:**

*This delivery is the same functionality for different quantity of tanks of antifreeze or water products to be delivered.*

Antifreeze / Water delivery is activated by such labeled switch on the main control panel and must be activated at the beginning of the delivery cycle. The product being delivered is labeled on the reel near the bibb hanger.

Reel out the necessary hose to easily reach the vehicle for the antifreeze / water and begin the delivery. Release the bibb when ample antifreeze / water have been delivered and reel in hose and hang the bibb in the storage loop beside the reel and de-activate switch.

## **NOTICE**

AFTER INITIAL FILLING OF PRODUCT TANKS,  
OR CHANGE IN PRODUCT MIX, OF THE OILS  
OR ANTIFREEZE PRODUCTS YOU REQUIRE; PULL  
THE DELIVERY HOSE FULL LENGTH FROM THE  
REEL AND RUN 1 ½ - 2 GALLONS INTO THE WASTE  
TANKS TO REMOVE LUBRICANT RESIDUE FROM  
PUMP, HOSES AND NOZZLE USED FOR TESTING  
AND PROTECTION OF HYDRAULIC COMPONENTS

## Operation –continued

Waste Oil (Salvage) Operation to load and unload the tank.

- Turn on the waste oil switch in the control panel located in the reel compartment to forward or reverse.
- Unroll the waste oil hose and add the extension tube by snapping together the quick coupling and install in the correct container for your operational choice.



## Air Compressor Tank

Drain air tanks daily to remove condensation by opening valve (one located in the Left front corner of the P-3 compartment next to the Hydra-Cool Reservoir)



## **GREASE SYSTEM OPERATION (Hydraulic Delivery)**

The grease is delivered from a reel located in the rear compartment.

Turn the chassis grease switch to the on position located inside the main control box also located in the rear compartment.

Grease pump will operate only when the nozzle handle is pulled to the on position and will stop when nozzle handle is released.

### **TO PRIME GREASE PUMP:**



**BLEEDER SCREW**



**BALL VALVE**

1. Loosen bleeder screw ½ turn.
2. Turn chassis grease switch to the on position in the main control box.
3. Open the ball valve (located on the hydraulic motor inlet) slowly; allowing pump to stroke slowly until grease begins to come from the bleeder screw.
4. Close the ball valve.
5. Close the bleeder screw.
6. While holding the dispensing nozzle in the on position; slowly open the ball valve to full on position (pump should stroke between 65-75 strokes per minute).

## HYDRAULIC SYSTEM

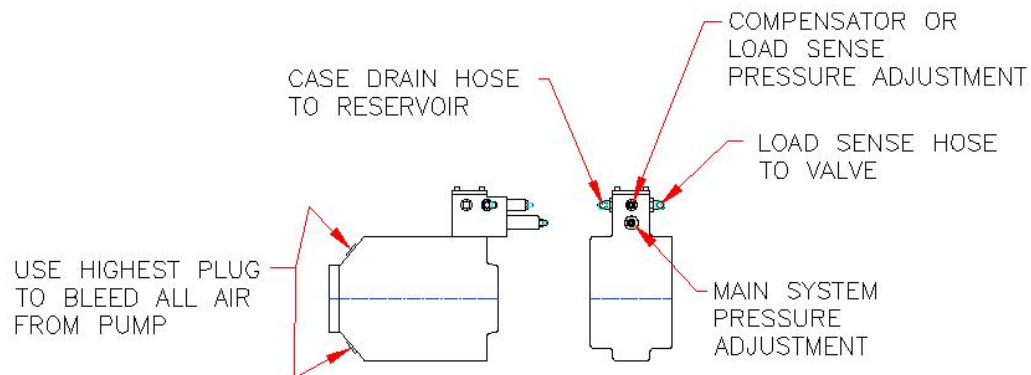
No Hydraulic Power	No hydraulic fluid	Fill with fluid (minimum lower site glass)
	Damaged or worn hydraulic pump	Rebuild or replace pump
	Damaged relief valve	replace relief valve
Slow Hydraulic power	Low hydraulic fluid level	Fill with fluid (minimum lower site glass)
	Plugged hydraulic filter	Replace filter
	Worn hydraulic pump	Rebuild or replace pump
	Improper relief pressure setting	Adjust relief valve Let machine warm up before operating hydraulic system
	Cold hydraulic Fluid	
Oil foams	Low hydraulic fluid level	Add hydraulic fluid
	Air leak between reservoir and pump	Repair leak
	Water in hydraulic fluid	Change fluid

## Lubricants

Recommendation		Capacity	Specification/ Notes
Hydraulic Fluid		8 gallons	Conoco Super hydraulic oil 46 (ISO VG46) or equal
Grease	Air reel pivots (as required)		EP rated grease  Fittings and grease applicator nozzle must be clean before applying grease. Replace all missing fittings.

## Hydraulic System

System Pressure	2400 psi maximum
Reservoir capacity	4 gallons
System Flow	32 gpm



***(Set on Pump)***

**Set Load Sense at 325 ±25 psi**

**Set Main Pressure at 2400 ±50 psi (Deadhead Valve)**

**Pressure: IN to Increase ----- OUT to Decrease (4mm Hex)**

**Flow: OUT to Increase ----- IN to Decrease (3mm Hex, 10mm wrench)**

***(Set on Hydraulic Valve)***

**Air Compressor -- H-35 --- 2200 psi**

**IR40 --- 2250 psi**

**Flow: 12 GPM**

**RPM: 1800 Range: 120-150**

**Oil 1-4 Set Pressure at 1000 psi**

**Set Flow(GPM) at 6 GPM**

**Anti-Freeze Set Pressure at 1000 psi**

**Set Flow(GPM) at 4 GPM**

**Grease Set Pressure at 1250 psi max.**

**Set Flow(GPM) at 70-75 strokes per minute**

**Warranty Period: 12 Months**

Summit Truck Bodies, LLC (hereinafter "Summit") warrants each new service and lube body of Summit's manufacture to be free from defects in material and workmanship, under normal use and service for a period of one (1) year after initial purchase as derived from a completed warranty registration card. This Limited Warranty shall apply only to complete bodies of Summit's manufacture. Parts are covered by a separate limited warranty. EQUIPMENT AND ACCESSORIES NOT OF SUMMIT'S MANUFACTURE ARE WARRANTED ONLY TO THE EXTENT OF THE ORIGINAL MANUFACTURER'S WARRANTY AND ARE SUBJECT TO THEIR ALLOWANCE TO SUMMIT ONLY IF FOUND TO BE DEFECTIVE BY SUCH MANUFACTURER.

**Warranty Terms**

During the Limited Warranty period specified above, any defect in material and workmanship in any warranted item of Summit bodies not excluded below shall be repaired or replaced at Summit's option by a Summit representative or approved repair facility. Summit will pay for replacement parts and such approved repair shop's labor in accordance with Summit's labor reimbursement policy below. Summit reserves the right to supply remanufactured, replacement parts as it deems appropriate.

**Retail Purchaser Responsibility**

This Limited Warranty requires proper maintenance and periodic inspections of the bodies and accessories as indicated in the Operator's Manual furnished with each new Summit body. The cost of routine maintenance and services is the responsibility of the retail purchaser. The retail purchaser is required to keep documented evidence that these services were performed.

The Summit Truck Bodies, LLC Limited Warranty may be subject to cancellation if the above requirements are not performed.

Summit bodies or accessories with known failed or defective parts must be immediately removed from service.

**Exclusions and Limitations**

The warranties contained herein shall NOT APPLY TO:

1. Any defect which was caused (in Summit's sole judgment) by other than normal use and service of the body or accessory or by any of the following: (i) accidents including but not limited to collision (ii) misuse or negligence (iii) overloading (iv) lack of reasonable and proper maintenance (v) improper repair or installation (vi) unsuitable storage (vii) non-Summit alteration or modification (viii) natural calamities (ix) vandalism
2. Any body or accessory whose identification numbers or marks have been altered or removed.
3. Any body or accessory which any of the required or recommended periodic inspection or services have been performed using parts not manufactured or supplied by Summit or meeting Summit specification.
4. New bodies or accessories delivered to the retail purchaser in which the warranty registration is not returned within fourteen (14) days from the date of delivery.
5. Any defect which was caused (in Summit's sole judgment) by operation of the body or accessory not abiding by standard operating procedures outlined in the Operator's Manual.

6. Items not of Summit manufacture including but not limited to the chassis, crane, welder, hydraulic and PTO components, tool drawer packages, and electronic components are the responsibility of the respective product's manufacturer. Summit recognizes that these components are an important part of the end product and will facilitate the repair or replacement of such parts by a. providing replacement parts where possible; b. facilitating the shipment of part from the manufacturer; and/or c. directing the customer to an authorized repair facility for said part.
7. Costs incurred by Summit for replacement parts for items not of Summit manufacture will be invoiced to the customer. To be considered for warranty, the failed part must be returned, at the discretion of Summit, to Summit or the manufacturer of the part within fourteen (14) days. The part will be evaluated and if warranty is approved by the manufacturer credit will be issued to the customer in the form of a. Credit to a Summit account if one exists or b. Credit back to a charge card or c. Check to the customer.
8. Transportation costs, if any, of transporting unit to an approved repair facility.
9. In no event shall Summit's liability exceed the purchase price of the product.
10. Summit shall not be liable to any person under any circumstances for any incidental or consequential damages (including but not limited to loss of profits and out of service time) occurring for any reason at any time.
11. Diagnostic and overtime premiums are not covered under this Limited Warranty Policy.
12. Depreciation caused by normal wear, lack of reasonable maintenance, failure to follow operating instructions, misuse, or lack of proper protection during storage.
13. Accessory systems and electronics not of Summit's manufacture are warranted only to the extent of such manufacturer's respective Limited Warranty, if any.
14. Any installation of a body on chassis other than original factory installation.

### **Parts Warranty**

Parts replaced in the warranty period will receive the balance of the first year Summit Truck Bodies, LLC Limited Warranty, during the first twelve (12) months. Replacement parts after the original warranty period are warranted to be free from defects in material for ninety (90) days or the part will be repaired or replaced without labor coverage for removal or installation.

### **Summit Labor Reimbursement Policy**

Summit will consider labor reimbursement during the defined warranty period provided that the repair is pre-approved. Contact the Service Department at Summit for details.

### **Shipping Costs**

Summit will pay for shipping of warranty parts by ground carrier. Expedited freight delivery is available at the expense of the owner. Shipping for the return of parts for warranty consideration will be at the owner's expense but will be reimbursed if the parts in question are deemed defective by Summit or by the manufacturer of the part.

### **Exclusion of Warranties**

Except for the warranties expressly and specifically made herein, Summit makes no other warranties, and any possible liability of Summit hereunder is in lieu of all other warranties, expressed, implied, or statutory including but not limited to any warranties of merchantability or fitness for particular purpose. Summit reserves the right to modify, alter, and improve any product previously sold without incurring any obligation to replace any product previously sold without such modification. No person is authorized to give any other warranty or assume any additional obligation on Summit's behalf.